



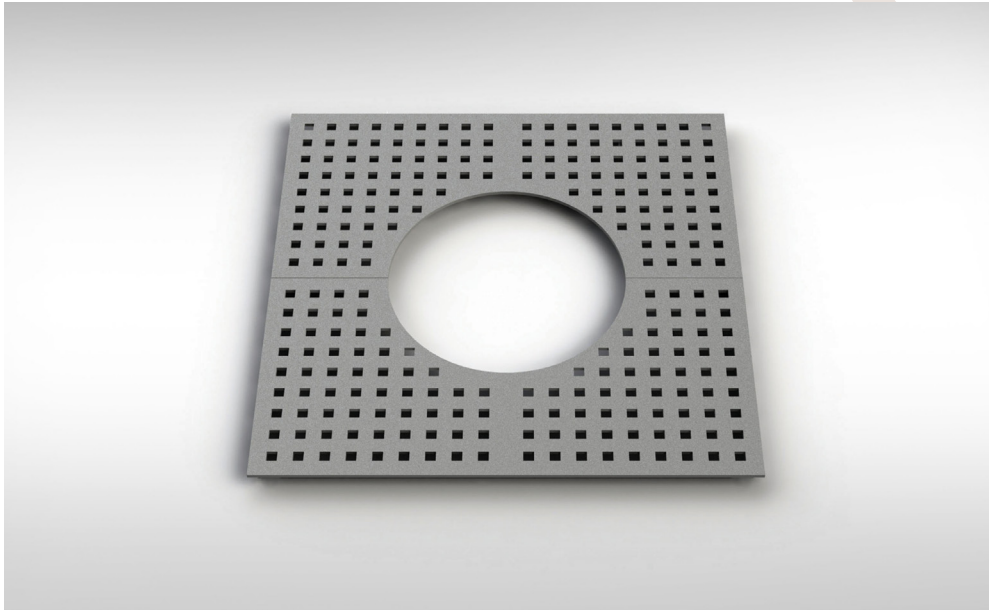
# OMOS

cit LC  
Tree Grille



[www.omos.ie](http://www.omos.ie)  
+ 353 45 899 802

# cit LC Tree Grille



**DESCRIPTION**

Galvanized mild steel tree grille in two parts with a powder coated finish.

**DIMENSIONS**

Width/Depth  
900/1200mm (nominal),  
Inner Diameter  
500/600mm.

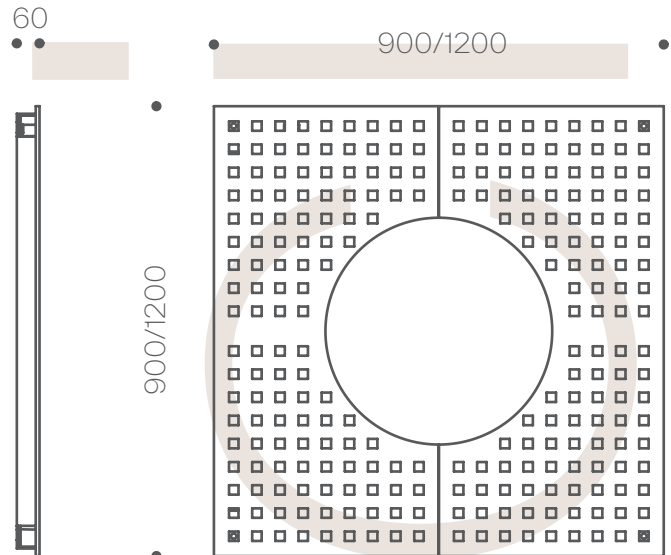
**OPTIONS**

Choice of RAL colours for powder coating.

Constructed from galvanized mild steel with an anti-slip paint finish, the cit LC proves a practical and durable solution to in-paving tree planting.

The tree grille supports the health and longevity of urban trees while enhancing the aesthetic and functional aspects of outdoor spaces.

The cit LC is available in a number of anti-slip paint colours.



# cit LC Fixing Instructions

**FOR AREAS ALREADY PAVED**

1. Determine the location for the tree grille. Remove pavers and cast a strip foundation to minimum dimensions of L900/1200 x W900/1200 x D100 to fit the size of the grille. The size of the foundations may vary depending on the ground conditions.
2. Fill the hole with 35N20 concrete ensuring a good smooth surface finish. The top surface of the foundation should be approximately 60mm below finished paving level. Allow sufficient time to set.
3. Position the grille in the desired location and mark hole positions making sure this is done accurately.
4. Remove the grille and drill 4 x 10mm holes to a depth of 150mm. Install Side A of the grille by bolting down through grille at two corners only. Use M10 through bolts to fix (such as Hilti HSA M10 x 120).
5. Install Side B of the grille by slotting the two tabs under Side A and ensure they are level and aligned. Bolt down through the grille at the two corners.
6. Replace the paving slabs up to the edge of the tree grille. The top surface should be flush with finished paving level.

**FOUNDATIONS**

Foundations must be to engineer's specification.

