



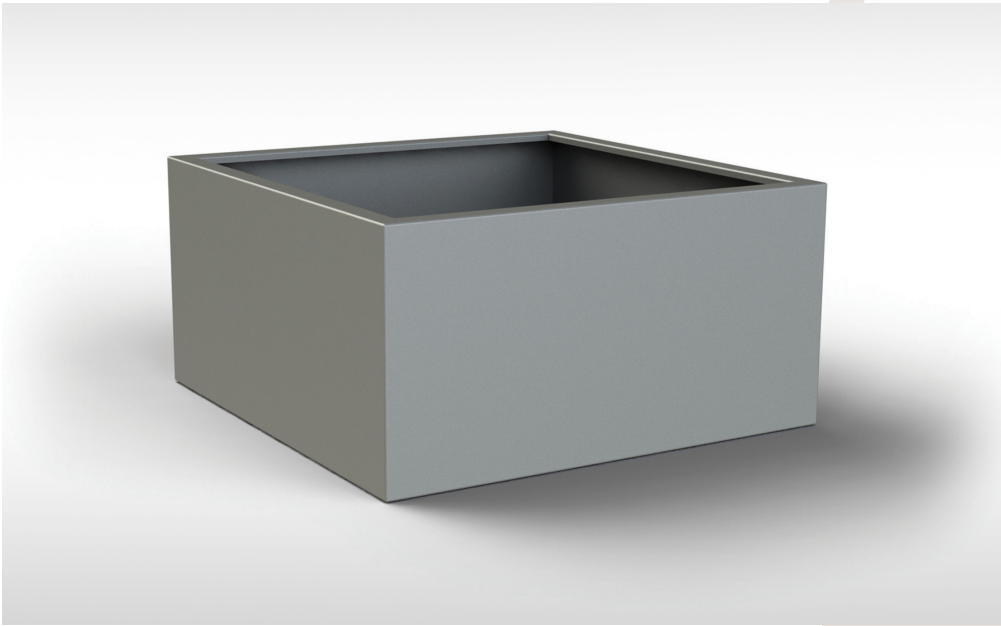
OMOS

s21.2
Planter

www.omos.ie
+ 353 45 899 802



s21.2 Planter



DESCRIPTION
Aluminium planter with a powder coated finish or corten option. Available with or without base panel (plinth or feet). Optional cantilever seat.

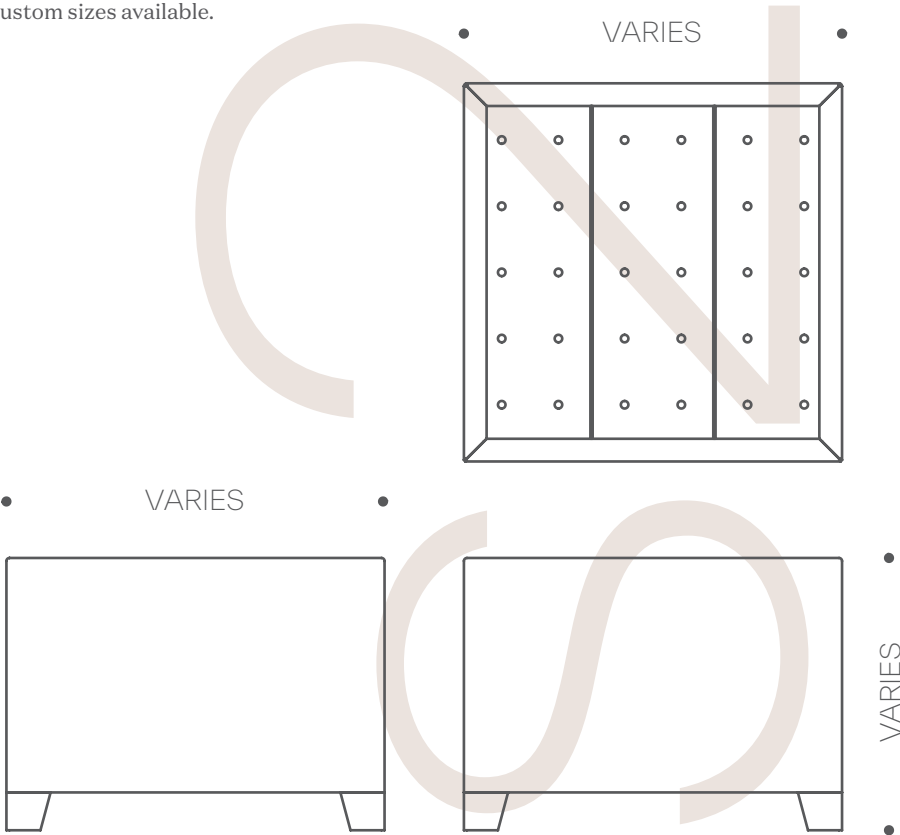
DIMENSIONS
Width 450mm, Depth 450mm, Height 450mm. Bespoke sizes available.

OPTIONS
Choice of RAL colours for powder coating.
Choice of metal.
Choice of base panel.
Optional cantilever seat.
Custom sizes available.

Constructed from aluminium with a powder coated finish or Corten steel, the s21.2 planter offers a sleek and durable solution for showcasing greenery in any outdoor space.

The s21.2 planter is available with or without a base and with the option of feet to facilitate forklift transportation.

The planter is completely customizable in terms of size and colour and can be combined with hardwood cantilever seat.



Maintaining Powder Coating



MAINTENANCE

Polyester powder coating is a dry finishing process where a polyester resin powder is applied to a metallic surface and then oven-baked. This creates a durable, protective finish that resists corrosion, weathering, and UV damage. Its versatility allows for a wide range of colour choices, ensuring vibrant and long-lasting aesthetics for diverse applications.

Despite its durability, some care is required to maintain the appearance of the material. The extent to which maintenance is required depends on a number of factors. These include environmental conditions, construction activity and level of use.

To maintain the original appearance of the metalwork, it should be cleaned regularly using warm soapy water. Avoid the use of abrasive cleaners as they may damage the surface finish.

Should the coating become chipped or scratched, it can be touched up using a colour matching metal paint. Where the surface becomes damaged clean with a wire brush or sandpaper, then paint with an outdoor metal paint. Omos recommends Uni 2k paint which can be purchased from most industrial or automotive paint suppliers. We recommend testing on a hidden area to ensure a good colour match before applying to the damaged region. For further advice contact Omos.

Weathering Steel



WEATHERING STEEL

Weathering Steel, also known as Corten (the original brand name), is an extremely durable material, which makes it suitable for many street furniture applications. Before choosing Weathering Steel, it's important to consider a potential downside: the pigmented runoff from the material. Until Weathering Steel fully stabilizes, this runoff may stain the ground beneath or transfer onto anything it comes into contact with, such as clothing.

Mitigation measures can be taken, such as gravel borders, or grating around objects. Sealers can be used where contact is likely, but they do detract from the natural look of the material and, unlike exposed Weathering Steel, do require maintenance.

Maintaining Weathering Steel



MAINTENANCE

Prior to shipping, all our weathering steel has been shot blasted to remove mill scale and give the surface an even finish. Once the material has been shot blasted, it has a grey metallic appearance but will quickly start to oxidize and turn orangey-brown, which darkens over time.

There may be some unevenness in the finish initially, as the initial formation of the passive layer sees a very distinctive change in colour over a short period of time. Any unevenness will disappear within a number of months. The patination process can be accelerated by the use of chemicals, but the simplest and safest way to speed up the process is by spraying the material with a saltwater solution over a period of a couple of weeks.

Should the Corten require cleaning this can be done using a scrubbing brush and warm water with a mild detergent. Avoid abrasive cleaners as they will remove or alter the texture of the weathered surface. Graffiti can be removed using a graffiti remover such as AF Graffiti Remover Gel GRG400.

Maintaining Galvanized Steel



MAINTENANCE

Galvanized mild steel is well-known for its durability and low maintenance. The zinc coating on galvanized mild steel provides excellent protection against corrosion, making it highly durable and suitable for outdoor applications.

To maintain the original appearance of the metalwork, regular cleaning with mild soap and water helps remove dirt, grime, and other surface contaminants. Avoid harsh abrasives or cleaners that may damage the protective zinc coating.

Should the coating become damaged and the steel beneath exposed, it is often possible to repair small areas by the application of zinc-rich paints. These paints contain a high concentration of zinc dust or zinc particles suspended in a binder. When applied to the damaged area, the zinc in the paint forms a protective barrier that helps prevent corrosion.