



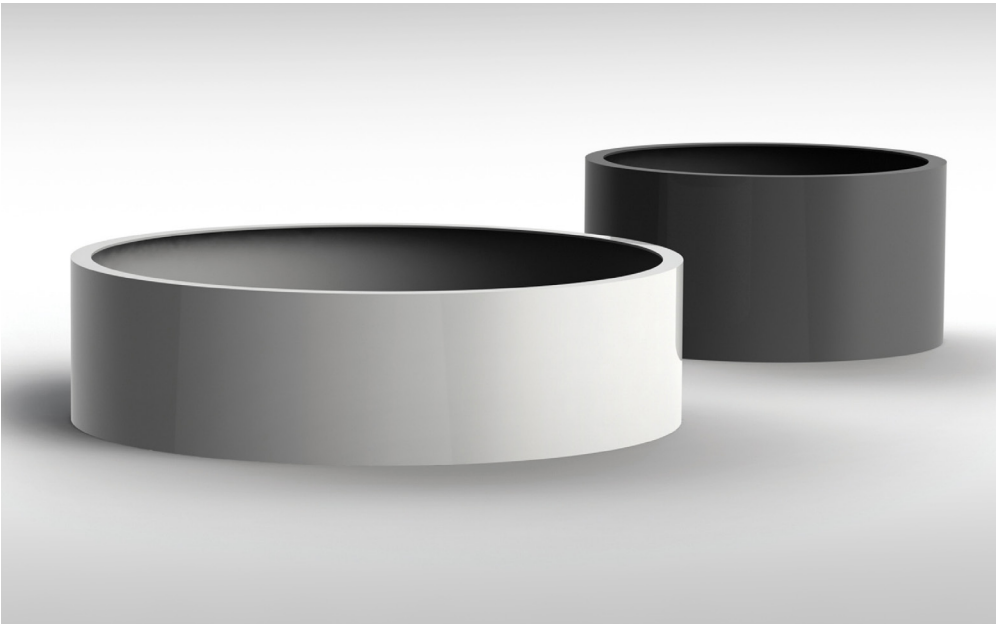
OMOS

s95
Planter

www.omos.ie
+ 353 45 899 802



s95 Planter



DESCRIPTION
Aluminium planter with a powder coated finish. Base in galvanized mild steel.

DIMENSIONS
Various size options available.

OPTIONS
Choice of RAL colours for powder coating. Bespoke sizes.

Constructed from powder coated aluminium and galvanized mild steel, the s95 combines durability with aesthetics.

The s95 is available in bespoke sizes and any RAL colour to suit your preferred aesthetic.

The planter is available with a 316 grade stainless steel top, providing additional protection.

www.omos.ie
+ 353 45 899 802



Maintaining Galvanized Steel



MAINTENANCE

Galvanized mild steel is well-known for its durability and low maintenance. The zinc coating on galvanized mild steel provides excellent protection against corrosion, making it highly durable and suitable for outdoor applications.

To maintain the original appearance of the metalwork, regular cleaning with mild soap and water helps remove dirt, grime, and other surface contaminants. Avoid harsh abrasives or cleaners that may damage the protective zinc coating.

Should the coating become damaged and the steel beneath exposed, it is often possible to repair small areas by the application of zinc-rich paints. These paints contain a high concentration of zinc dust or zinc particles suspended in a binder. When applied to the damaged area, the zinc in the paint forms a protective barrier that helps prevent corrosion.

Maintaining Powder Coating



MAINTENANCE

Polyester powder coating is a dry finishing process where a polyester resin powder is applied to a metallic surface and then oven-baked. This creates a durable, protective finish that resists corrosion, weathering, and UV damage. Its versatility allows for a wide range of colour choices, ensuring vibrant and long-lasting aesthetics for diverse applications.

Despite its durability, some care is required to maintain the appearance of the material. The extent to which maintenance is required depends on a number of factors. These include environmental conditions, construction activity and level of use.

To maintain the original appearance of the metalwork, it should be cleaned regularly using warm soapy water. Avoid the use of abrasive cleaners as they may damage the surface finish.

Should the coating become chipped or scratched, it can be touched up using a colour matching metal paint. Where the surface becomes damaged clean with a wire brush or sandpaper, then paint with an outdoor metal paint. Omos recommends Uni 2k paint which can be purchased from most industrial or automotive paint suppliers. We recommend testing on a hidden area to ensure a good colour match before applying to the damaged region. For further advice contact Omos.