



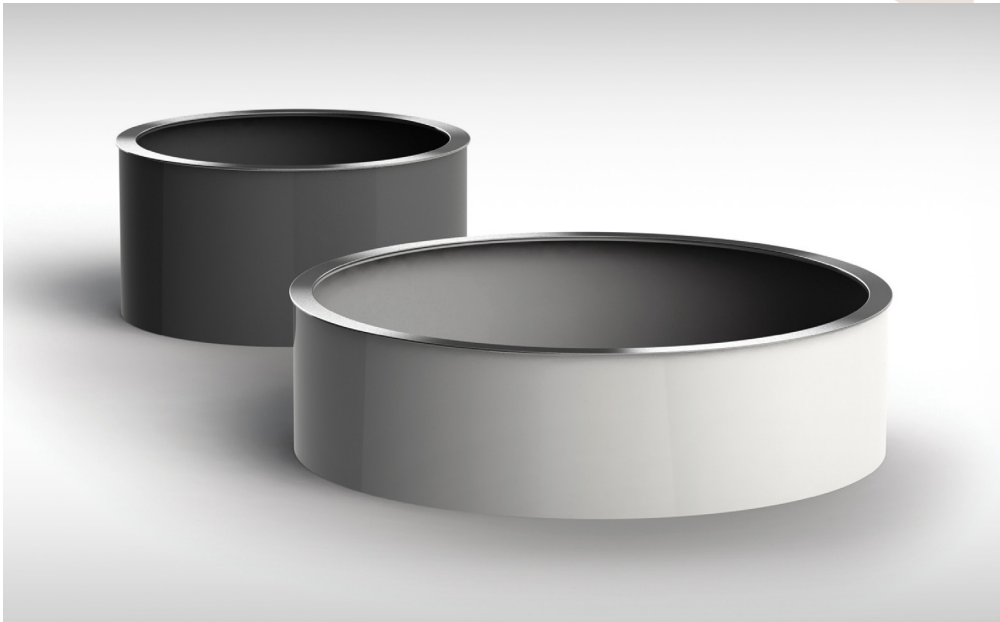
OMOS

s95.2
Planter

www.omos.ie
+ 353 45 899 802



s95.2 Planter



DESCRIPTION

Aluminium planter with a powder coated finish. Base in galvanized steel and top rim in 316 grade stainless steel.

DIMENSIONS

Various size options available.

OPTIONS

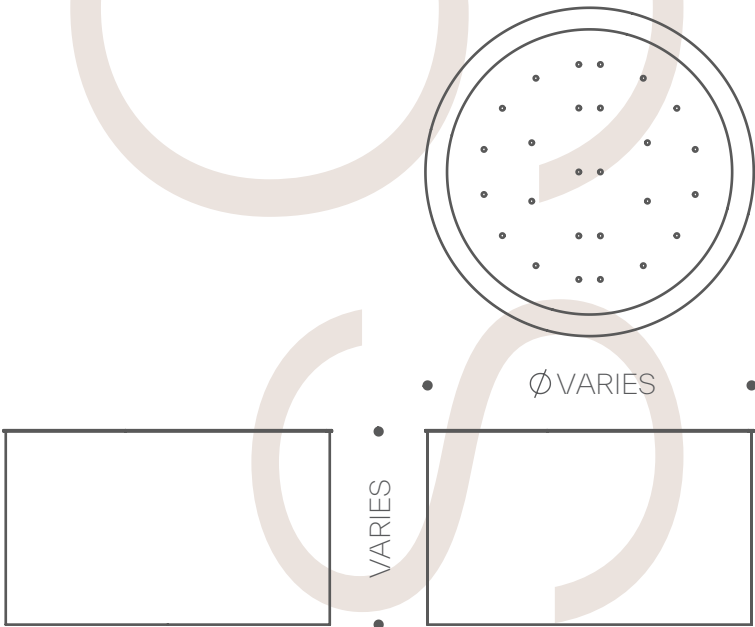
Choice of RAL colours for powder coating. Choice of size.

Constructed from powder coated aluminium, 316 grade stainless steel and galvanized mild steel, the s95.2 combines durability with aesthetics.

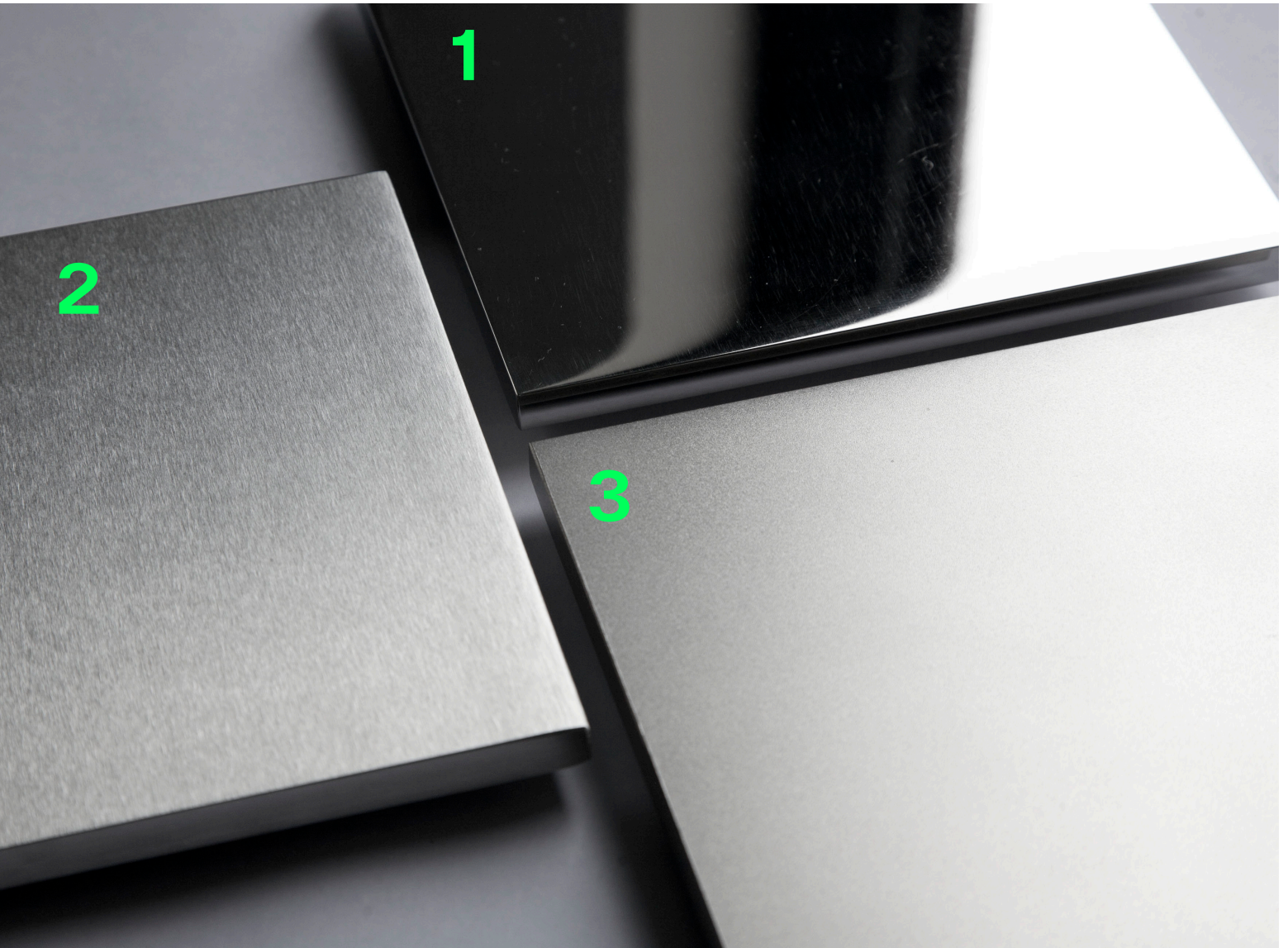
The s95.2 is available in bespoke sizes and any RAL colour to suit your preferred aesthetic.

The planter is available without the stainless steel top rim.

www.omos.ie
+ 353 45 899 802



Stainless Steel Finishes



316 GRADE STAINLESS STEEL

1. MIRROR POLISHED

Stainless steel with a mirror polished finish undergoes a process that results in a smooth and highly reflective surface. This finish offers a shiny, mirror-like appearance, enhancing the steel's aesthetic appeal.

2. BRUSHED POLISH

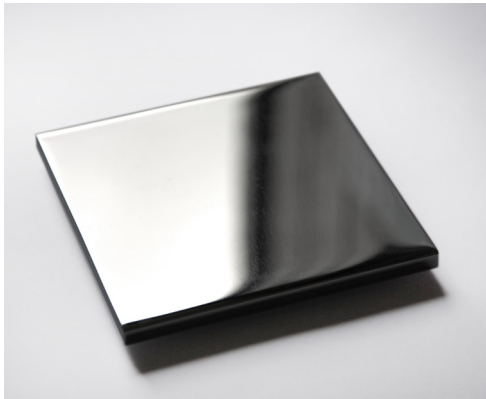
Stainless steel with a brushed polish finish undergoes a process involving abrasive belts which create fine parallel lines on the surface, giving it a muted sheen and a directional texture.

3. BEAD BLASTED

Stainless steel with a bead blasted finish is textured using abrasive glass beads, resulting in a non-reflective, matte surface. This finish provides a uniform appearance with a soft texture while maintaining the steel's corrosion resistance.

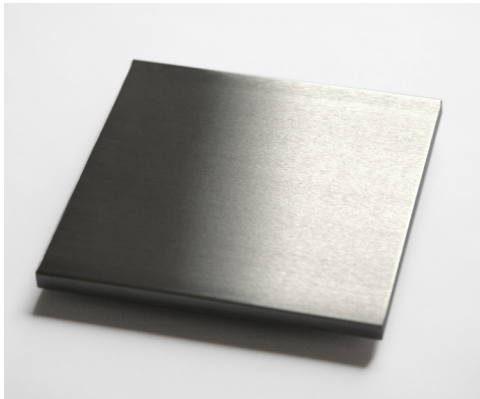
Maintaining Stainless Steel

Prior to shipping, our stainless steel has been passivated to ASTM A380 and ASTM 976 01-8.1 to ensure the highest standard. Rust spots or 'tea stains' can occur on the surface, these are normally caused by contamination from carbon steel, particularly in areas where construction work has been undertaken. Such stains can be removed using a non-abrasive rust remover such as RC Disox supplied by Abcon Industrial Products Ltd. Follow chemical manufacturers' health and safety instructions and take extreme care to protect any other surfaces from exposure to the chemical.



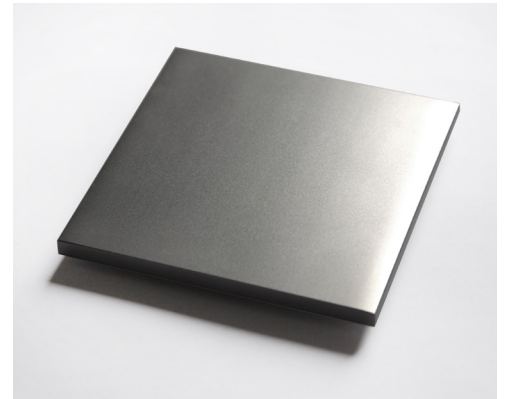
MIRROR POLISHED STAINLESS STEEL

To clean mirror polished stainless steel, use only a non-abrasive sponge or cloth as abrasive materials will damage the mirror-like appearance of the finish. The material should be cleaned using mild detergents and warm water.



BRUSH POLISHED STAINLESS STEEL

To clean brush polished stainless steel, a non abrasive cloth or sponge used with warm water and mild detergent is recommended. If abrasive cleaning is required, use an abrasive fibre pad (such as Scotch-Brite™), not wire wool. Use a straight back-forward rubbing action parallel to the grain in the material.



BEAD BLASTED STAINLESS STEEL

To clean bead blasted stainless steel, a non abrasive cloth or sponge used with warm water and mild detergent is recommended. If abrasive cleaning is required, use an abrasive fibre pad (such as Scotch-Brite™), not wire wool. Use random circular rubbing actions when cleaning the material.

Maintaining Powder Coating



MAINTENANCE

Polyester powder coating is a dry finishing process where a polyester resin powder is applied to a metallic surface and then oven-baked. This creates a durable, protective finish that resists corrosion, weathering, and UV damage. Its versatility allows for a wide range of colour choices, ensuring vibrant and long-lasting aesthetics for diverse applications.

Despite its durability, some care is required to maintain the appearance of the material. The extent to which maintenance is required depends on a number of factors. These include environmental conditions, construction activity and level of use.

To maintain the original appearance of the metalwork, it should be cleaned regularly using warm soapy water. Avoid the use of abrasive cleaners as they may damage the surface finish.

Should the coating become chipped or scratched, it can be touched up using a colour matching metal paint. Where the surface becomes damaged clean with a wire brush or sandpaper, then paint with an outdoor metal paint. Omos recommends Uni 2k paint which can be purchased from most industrial or automotive paint suppliers. We recommend testing on a hidden area to ensure a good colour match before applying to the damaged region. For further advice contact Omos.

Maintaining Galvanized Steel



MAINTENANCE

Galvanized mild steel is well-known for its durability and low maintenance. The zinc coating on galvanized mild steel provides excellent protection against corrosion, making it highly durable and suitable for outdoor applications.

To maintain the original appearance of the metalwork, regular cleaning with mild soap and water helps remove dirt, grime, and other surface contaminants. Avoid harsh abrasives or cleaners that may damage the protective zinc coating.

Should the coating become damaged and the steel beneath exposed, it is often possible to repair small areas by the application of zinc-rich paints. These paints contain a high concentration of zinc dust or zinc particles suspended in a binder. When applied to the damaged area, the zinc in the paint forms a protective barrier that helps prevent corrosion.