



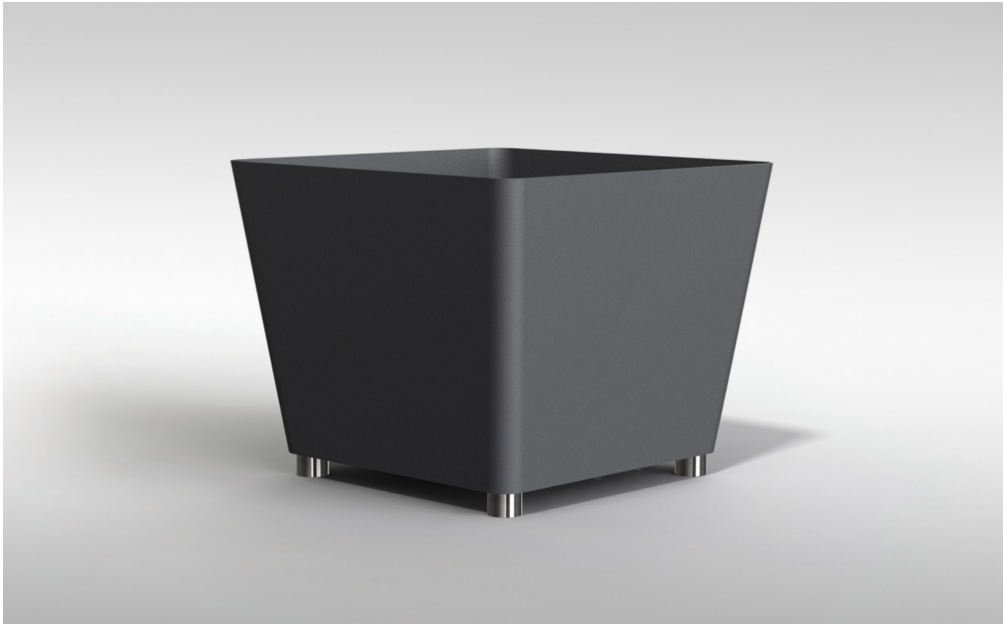
OMOS

t2
Planter

www.omos.ie
+ 353 45 899 802



t2 Planter



DESCRIPTION

Formed aluminium planter with powder coated finish. Adjustable 316 grade stainless steel feet with a brushed polish finish.

DIMENSIONS

Width/Depth (Base) 1000mm (Top) 1242mm, Height 970mm with 70mm adjustment

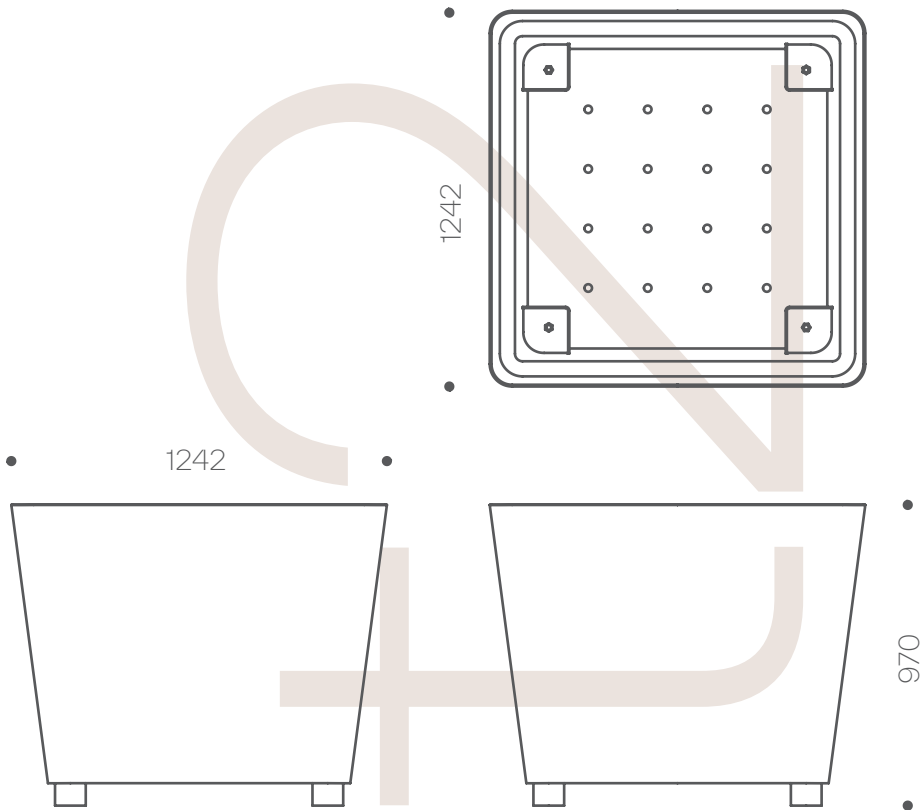
OPTIONS

Choice of RAL colours for powder coating. Bespoke sizes. Optional stainless steel feet.

Constructed from formed aluminium with a powder coated finish, the t2 combines durability with aesthetics.

The tapered form with radiused corners flows into the generously proportioned 316 grade stainless steel feet which give the assurance of stability and support.

The feet are adjustable allowing for level placement of the planter on off level surfaces and providing forklift access to allow the planter to be moved when planted.



Maintaining Powder Coating



MAINTENANCE

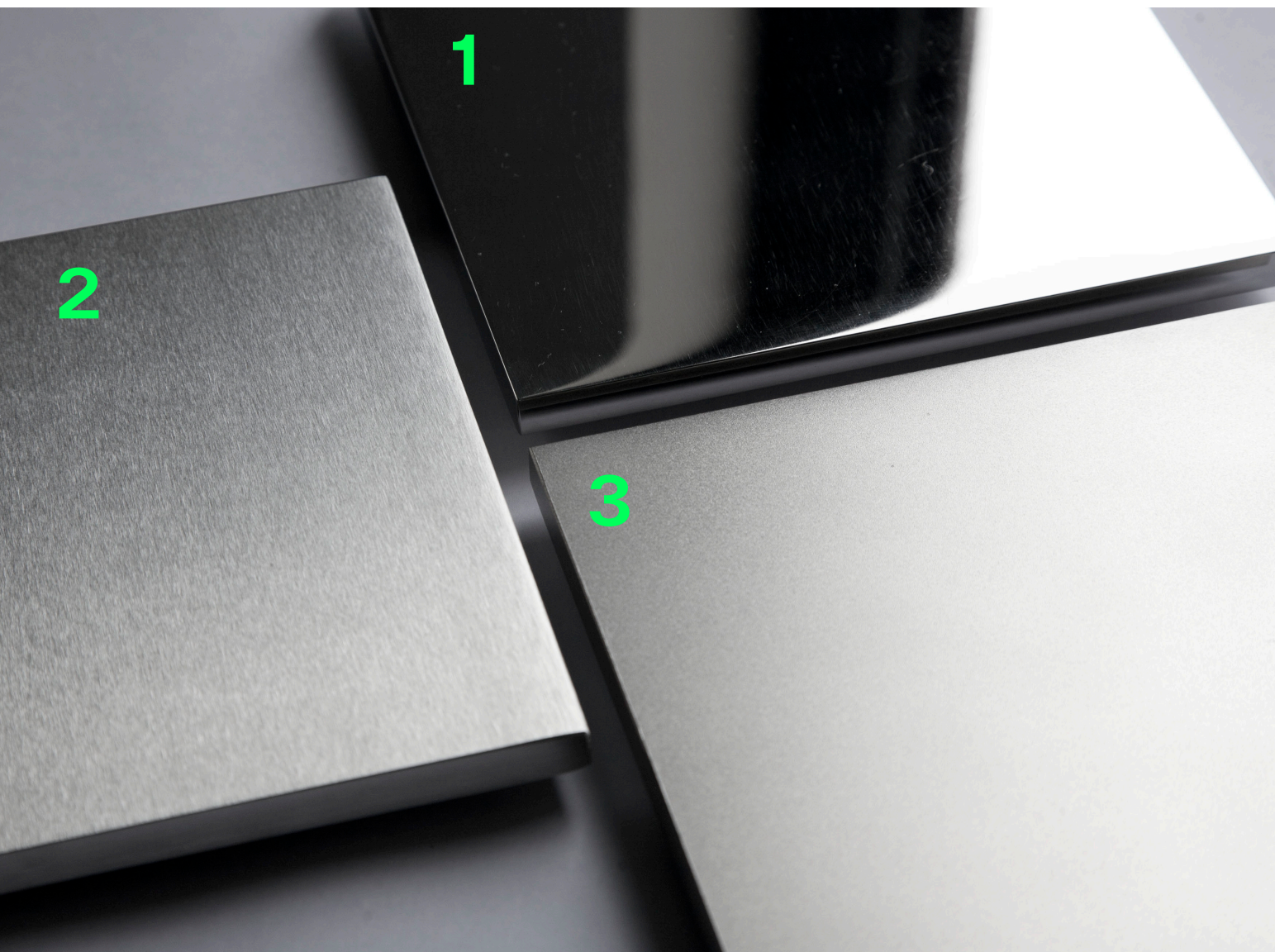
Polyester powder coating is a dry finishing process where a polyester resin powder is applied to a metallic surface and then oven-baked. This creates a durable, protective finish that resists corrosion, weathering, and UV damage. Its versatility allows for a wide range of colour choices, ensuring vibrant and long-lasting aesthetics for diverse applications.

Despite its durability, some care is required to maintain the appearance of the material. The extent to which maintenance is required depends on a number of factors. These include environmental conditions, construction activity and level of use.

To maintain the original appearance of the metalwork, it should be cleaned regularly using warm soapy water. Avoid the use of abrasive cleaners as they may damage the surface finish.

Should the coating become chipped or scratched, it can be touched up using a colour matching metal paint. Where the surface becomes damaged clean with a wire brush or sandpaper, then paint with an outdoor metal paint. Omos recommends Uni 2k paint which can be purchased from most industrial or automotive paint suppliers. We recommend testing on a hidden area to ensure a good colour match before applying to the damaged region. For further advice contact Omos.

Stainless Steel Finishes



316 GRADE STAINLESS STEEL

1. MIRROR POLISHED

Stainless steel with a mirror polished finish undergoes a process that results in a smooth and highly reflective surface. This finish offers a shiny, mirror-like appearance, enhancing the steel's aesthetic appeal.

2. BRUSHED POLISH

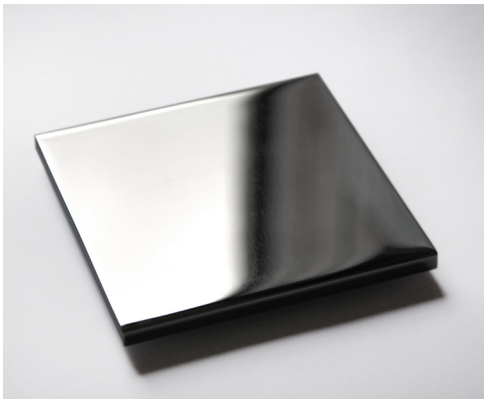
Stainless steel with a brushed polish finish undergoes a process involving abrasive belts which create fine parallel lines on the surface, giving it a muted sheen and a directional texture.

3. BEAD BLASTED

Stainless steel with a bead blasted finish is textured using abrasive glass beads, resulting in a non-reflective, matte surface. This finish provides a uniform appearance with a soft texture while maintaining the steel's corrosion resistance.

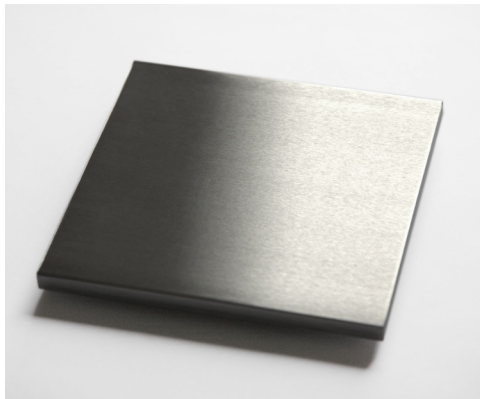
Maintaining Stainless Steel

Prior to shipping, our stainless steel has been passivated to ASTM A380 and ASTM 976 01-8.1 to ensure the highest standard. Rust spots or 'tea stains' can occur on the surface, these are normally caused by contamination from carbon steel, particularly in areas where construction work has been undertaken. Such stains can be removed using a non-abrasive rust remover such as RC Disox supplied by Abcon Industrial Products Ltd. Follow chemical manufacturers' health and safety instructions and take extreme care to protect any other surfaces from exposure to the chemical.



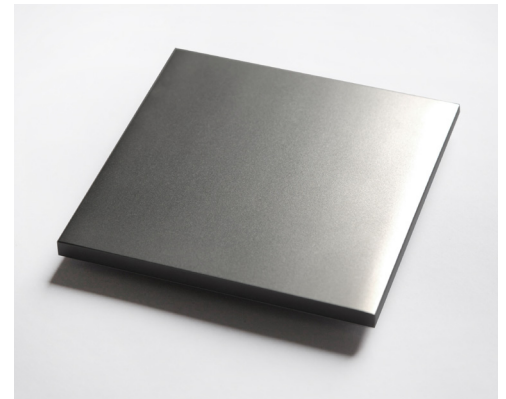
MIRROR POLISHED STAINLESS STEEL

To clean mirror polished stainless steel, use only a non-abrasive sponge or cloth as abrasive materials will damage the mirror-like appearance of the finish. The material should be cleaned using mild detergents and warm water.



BRUSH POLISHED STAINLESS STEEL

To clean brush polished stainless steel, a non abrasive cloth or sponge used with warm water and mild detergent is recommended. If abrasive cleaning is required, use an abrasive fibre pad (such as Scotch-Brite™), not wire wool. Use a straight back-forward rubbing action parallel to the grain in the material.



BEAD BLASTED STAINLESS STEEL

To clean bead blasted stainless steel, a non abrasive cloth or sponge used with warm water and mild detergent is recommended. If abrasive cleaning is required, use an abrasive fibre pad (such as Scotch-Brite™), not wire wool. Use random circular rubbing actions when cleaning the material.