



# OMOS

v33  
Indoor  
Litter Bin



[www.omos.ie](http://www.omos.ie)  
+ 353 45 899 802

# v33 Indoor Litter Bin



**DESCRIPTION**

Zintec steel with aluminium top and stainless steel aperture rims with internal SHS chassis. Powder coated finish throughout. Forward tilting door for easy access and emptying of dual heavy duty plastic liners. For indoor use only.

**DIMENSIONS**

Height 918mm, Width 623mm, Depth 338mm, Capacity 2 x 53L, Weight 41kg.

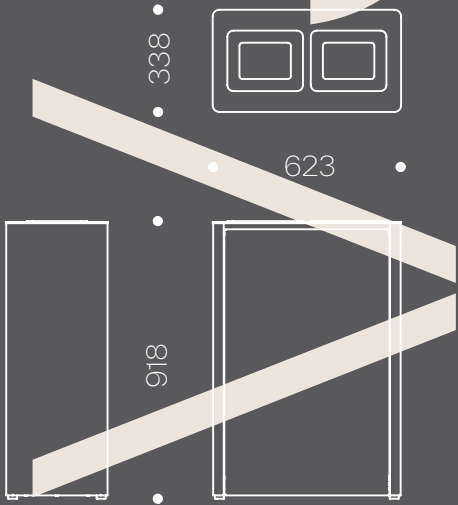
**OPTIONS**

Choice of RAL colours for powder coating.  
Choice of decal.

Constructed from zintec steel, aluminium, and stainless steel, the v33 combines function and aesthetic.

The bin offers a unique method of emptying with its tilting door. The two 53L liners swivel forward as the door is opened leaving them angled to reduce the bag lift height when being emptied.

The v33 offers a discrete solution to waste collection. The stream collection is optional, two stream or dual capacity of a single stream. Its shape allows it to be grouped for multiple collection streams if required.



# Maintaining Powder Coating



## MAINTENANCE

Polyester powder coating is a dry finishing process where a polyester resin powder is applied to a metallic surface and then oven-baked. This creates a durable, protective finish that resists corrosion, weathering, and UV damage. Its versatility allows for a wide range of colour choices, ensuring vibrant and long-lasting aesthetics for diverse applications.

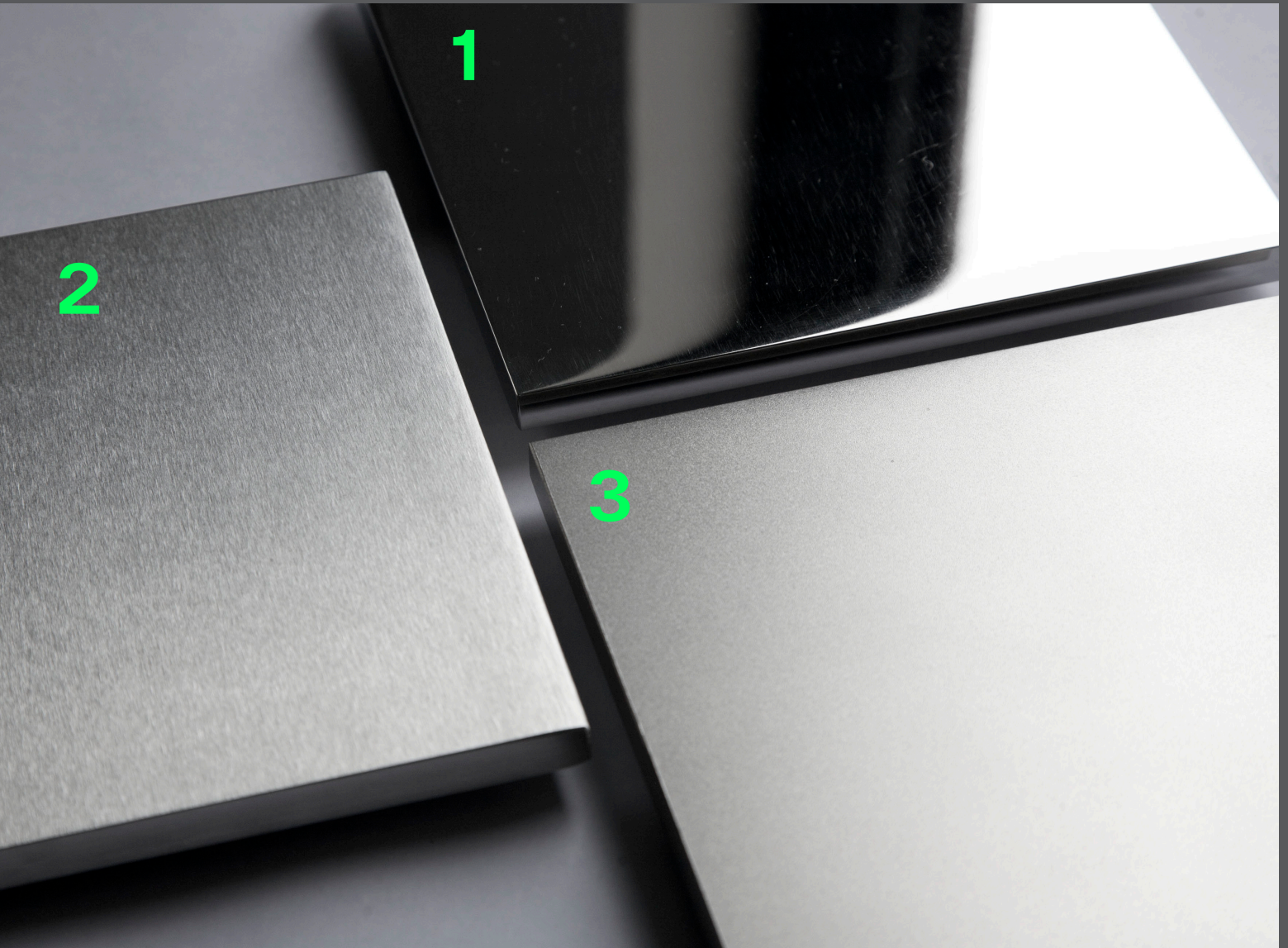
Despite its durability, some care is required to maintain the appearance of the material. The extent to which maintenance is required depends on a number of factors. These include environmental conditions, construction activity and level of use.

To maintain the original appearance of the metalwork, it should be cleaned regularly using warm soapy water. Avoid the use of abrasive cleaners as they may damage the surface finish.

Should the coating become chipped or scratched, it can be touched up using a colour matching metal paint. Where the surface becomes damaged clean with a wire brush or sandpaper, then paint with an outdoor metal paint. Omos recommends Uni 2k paint which can be purchased from most industrial or automotive paint suppliers. We recommend testing on a hidden area to ensure a good colour match before applying to the damaged region. For further advice contact Omos.



# Stainless Steel Finishes



## 316 GRADE STAINLESS STEEL

### 1. MIRROR POLISHED

Stainless steel with a mirror polished finish undergoes a process that results in a smooth and highly reflective surface. This finish offers a shiny, mirror-like appearance, enhancing the steel's aesthetic appeal.

### 2. BRUSHED POLISH

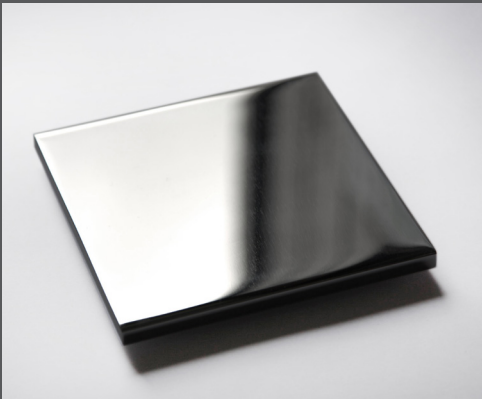
Stainless steel with a brushed polish finish undergoes a process involving abrasive belts which create fine parallel lines on the surface, giving it a muted sheen and a directional texture.

### 3. BEAD BLASTED

Stainless steel with a bead blasted finish is textured using abrasive glass beads, resulting in a non-reflective, matte surface. This finish provides a uniform appearance with a soft texture while maintaining the steel's corrosion resistance.

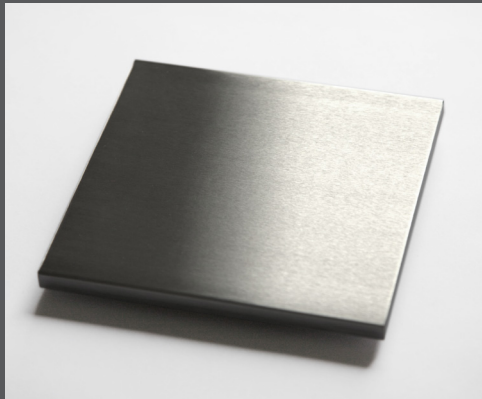
# Maintaining Stainless Steel

Prior to shipping, our stainless steel has been passivated to ASTM A380 and ASTM 976 01-8.1 to ensure the highest standard. Rust spots or 'tea stains' can occur on the surface, these are normally caused by contamination from carbon steel, particularly in areas where construction work has been undertaken. Such stains can be removed using a non-abrasive rust remover such as RC Disox supplied by Abcon Industrial Products Ltd. Follow chemical manufacturers' health and safety instructions and take extreme care to protect any other surfaces from exposure to the chemical.



## MIRROR POLISHED STAINLESS STEEL

To clean mirror polished stainless steel, use only a non-abrasive sponge or cloth as abrasive materials will damage the mirror-like appearance of the finish. The material should be cleaned using mild detergents and warm water.



## BRUSH POLISHED STAINLESS STEEL

To clean brush polished stainless steel, a non abrasive cloth or sponge used with warm water and mild detergent is recommended. If abrasive cleaning is required, use an abrasive fibre pad (such as Scotch-Brite™), not wire wool. Use a straight back-forward rubbing action parallel to the grain in the material.



## BEAD BLASTED STAINLESS STEEL

To clean bead blasted stainless steel, a non abrasive cloth or sponge used with warm water and mild detergent is recommended. If abrasive cleaning is required, use an abrasive fibre pad (such as Scotch-Brite™), not wire wool. Use random circular rubbing actions when cleaning the material.